

Für Mensch & Umwelt

Umwelt 
Bundesamt

36th ICP MODELLING & MAPPING MEETING

General progress on CCE work

Christin Loran, Thomas Scheuschner, Markus Geupel
Coordination Centre for Effects (CCE)
German Environment Agency

Web-Conference, 21 – 23 April 2020

Report on recent CCE activities

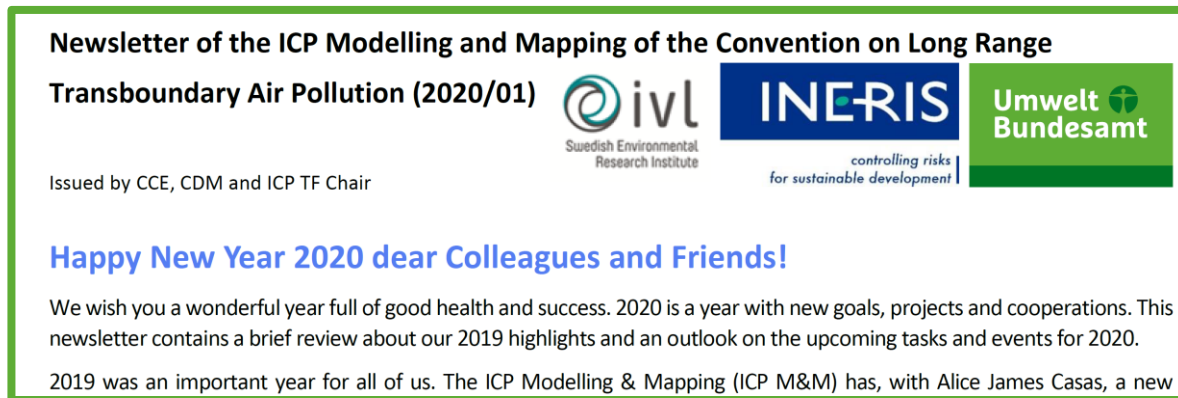
MEETINGS in which the CCE has participated since the last ICP M&M meeting in April 2019:

- 04/2019 – TFIAM meeting, Berlin
- 05/2019 – ICP Integrated Monitoring and ICP Waters meeting, Helsinki
- 07/2019 – **CCE started exchange about future collaboration with the new chair of the program center of the ICP Forests at the meeting of national parties of the CLRTAP, Neuglobsow**
- 09/2019 – 5th Joint Session EMEP SB/WGE, Geneva
- 10/2019 – JEG DM meeting, Sitges
- 11/2019 – **CCE visited EMEP at the Meteorological Synthesizing Centre – West (MSC-W), Oslo**
- 11/2019 – **Workshop on Regional Impact Assessment of Atmospheric Deposition and Air pollution on Forest Ecosystems, Niigata**
- 12/2019 – **CCE organized an expert meeting to prepare the review and revision of empirical Critical Loads, Dessau**
- 01/2020 – ICP Vegetation meeting, Riga
- 03/2020 – WGE/EMEP Bureaux meeting, Remote

Report on recent CCE activities

NEWSLETTER

- ICP M&M, CCE, CDM Newsletter approx. 2 times a year
- Sent by email and available on the [CCE homepage](#)



- **Dear NFC, please feel free to submit information relevant for the whole group so we can include it into our next newsletter!**

General progress on CCE work

Report on technical issues

CCE WEBSITE

- Contains contact details of the ICP M&M chair (there is no ICP M&M website)

CRITICAL LOAD DATA VIA WMS

Data of the Critical Load percentile will be available via WMS

- The connection can be tested using the following link (in ArcGIS):

<https://datahub.uba.de/server/services/Lu/CLL/MapServer/WMSServer>

- The content is not finalized yet

› Coordination Centre for Effects (CCE)

About CCE Data & Models Publications NFC Activities



Coordination Centre for Effects (CCE)

The CCE is pleased to welcome you to its new website! In 2018 the CCE was transferred to the German Environment Agency (UBA, located in Dessau) from the Dutch National Institute for Public Health (RIVM), where it was established in 1990.



News

Next meeting of Task Force M&M 2020 II New 2019-2021 Call for Data is out II Newsletter [read more](#)

★ 6

Contact

CCE - Coordination Centre for Effects
✉ cce@uba.de

German Environment Agency
Department II 4.3 Air Pollution Control and Terrestrial Ecosystems
Wörlitzer Platz 1
06844 Dessau
Germany

ICP M&M - International Cooperative Programme on Modelling and Mapping - Chairs Alice James Casas,
✉ Alice.JAMES@ineris.fr

French National Institute for Industrial Environment and Risks
Department of Hazards and Impact on Living Organisms
Parc Tech. ALATA, BP2
60550 Verneuil-en-Halatte
France

Related Publications



About CCE Data & Models Publications NFC Activities



Activities



Projects coordinated by CCE

Projects coordinated by the CCE in order to support the work of the ICP Modelling and Mapping. [read more](#)

★ 13



Meetings & Workshops

The CCE and ICP M&M organize every year a meeting and workshop in collaboration with participating institutions in order to support and strengthen the collaboration between the National Focal Centres (NFCs) and international experts. Upcoming: 36th Task Force Meeting, 27th CCE Workshop, and 1st CDMA Meeting/early agenda (5th March 2020). Registration form, more information will be available here a... [read more](#)

★ 12



Call for Data

The new Call for Data has been published in November 2019. The main

Report on CCE projects

PROJECTS COMPLETED IN 2019

R-Project

- Objective: The internal workflow of the CCE regarding the calculation of Critical Loads and their exceedance with the statistic program R will be supported.
- Duration: August – November 2019
- Contractor: Braincourt GmbH

Empirical Critical Loads: Literature review

- Objective: In this project a literature review on empirical Critical Loads will be conducted. This serves as preliminary study for the subsequent update of the empirical Critical Loads.
- Duration: September – December 2019
- Contractor: Thuenen Institute

Report on CCE projects

ONGOING PROJECTS 2020/2021

Review and revision of the empirical N Critical Loads for natural and semi-natural ecosystems

- Objective: Update of the empirical N Critical Loads published by Bobbink et al. 2011
- Duration: 2020 – 2021
- Carried out by: NFCs & Experts → will be discussed in detail in Session 2.2 of this meeting
- Coordinated by: CCE and Roland Bobbink

Background Database: Steady-State Critical Loads for eutrophication (by nitrogen) and acidification (by nitrogen and Sulphur) for European terrestrial ecosystems

- Objective: Revision and more detailed description of the existing background database, which was transferred from the RIVM to the UBA in 2018
- Duration: November 2019 – February 2021
- Contractor: Wageningen Environmental Research (Subcontractor: RIVM, IIASA)

Report on CCE projects

PLANNED PROJECT FOR 2021/2022

Update of the harmonized CLRTAP receptor map

CURRENT STATE OF THE LRTAP RECEPTOR MAP

For the calculation of critical loads (CCE), for deposition modelling (MSC-West), ozone-effects modelling (ICP Vegetation) knowledge of spatial distribution of receptors is necessary. For that purpose it exists a “harmonized” CLRTAP receptor map. The map has been compiled and updated lastly in 2007 by the former CCE from a mixture of existing digital and paper sources including the European Environment Agency (EEA) Corine Land Cover 2000, SEI Land European Cover Map (2002 Revision), FAO Soil Map of the World and EEA European Biogeographical regions (2005). The map contains information down to EUNIS level 3 for specific habitat types.

REASONS FOR UPDATING THE MAP

The currently used receptor map respectively the underlying background data is about 20 years old. Considering ongoing land use and land cover changes an update is essential.

PROPOSED APPROACH

- **Identifying and involving the current users of the map** in WGE and EMEP
- **Determining required updates and extensions** of the map
- **Preparing the call for tenders:** The CCE will prepare the call for tenders issued and financed by the German Environment Agency
- Planned start of the project: **2021**

NEXT STEPS – FUTURE OUTLOOK

A next step could be a spatial extension of the map to the entire region covered by the CLRTAP in order to ensure the calculation of air pollution effects for all member countries of the CLRTAP in the future. The current map is limited to geographical Europe.