



# ICP Modelling and Mapping

## New organisation of the ICP and its designated centres

Alice James Casas

ICP Modelling & Mapping Meeting  
Web-Conference, 21 - 23 April 2020



Contacts



[alice.james@ineris.fr](mailto:alice.james@ineris.fr)

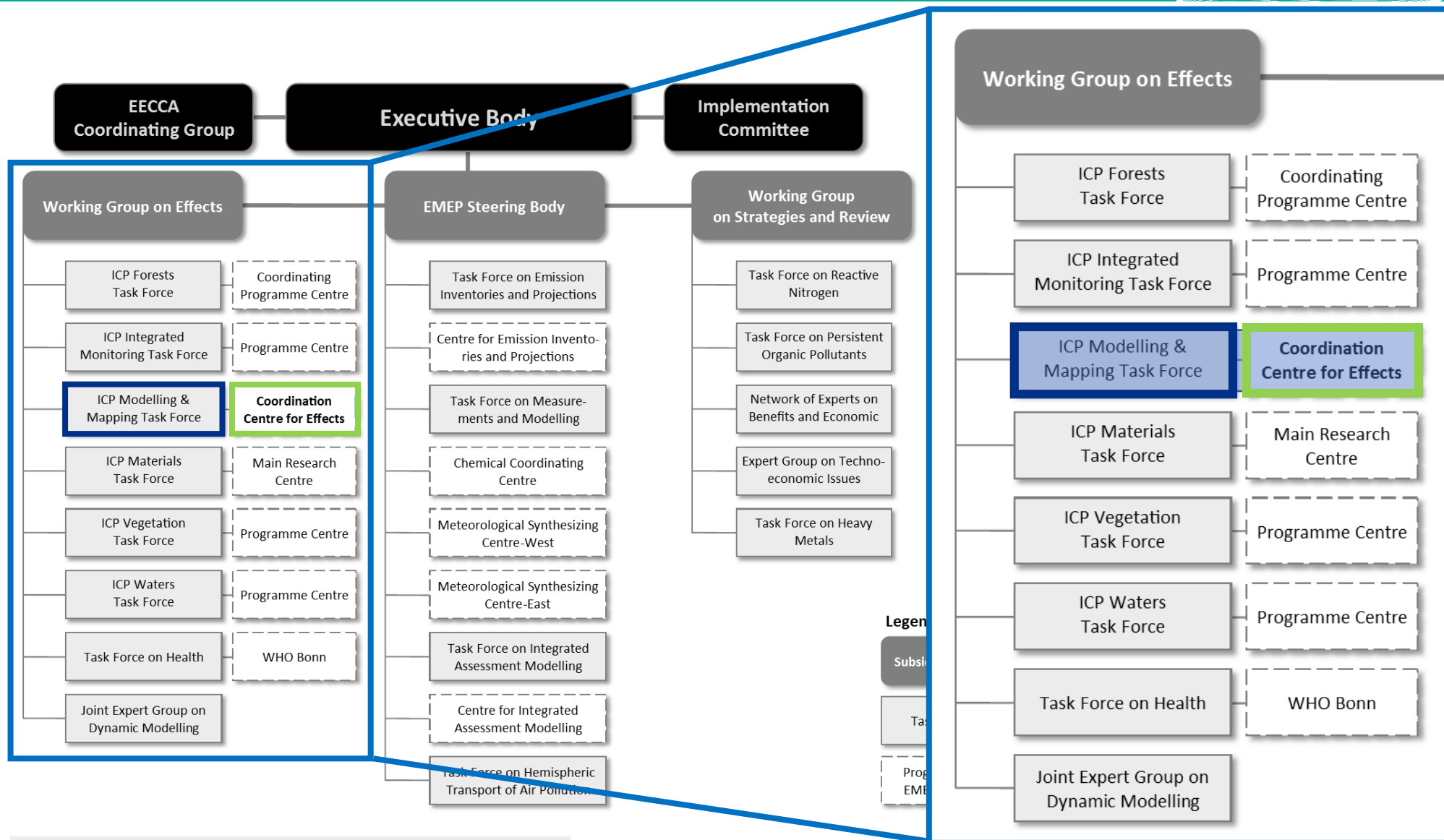


[cce@uba.de](mailto:cce@uba.de)



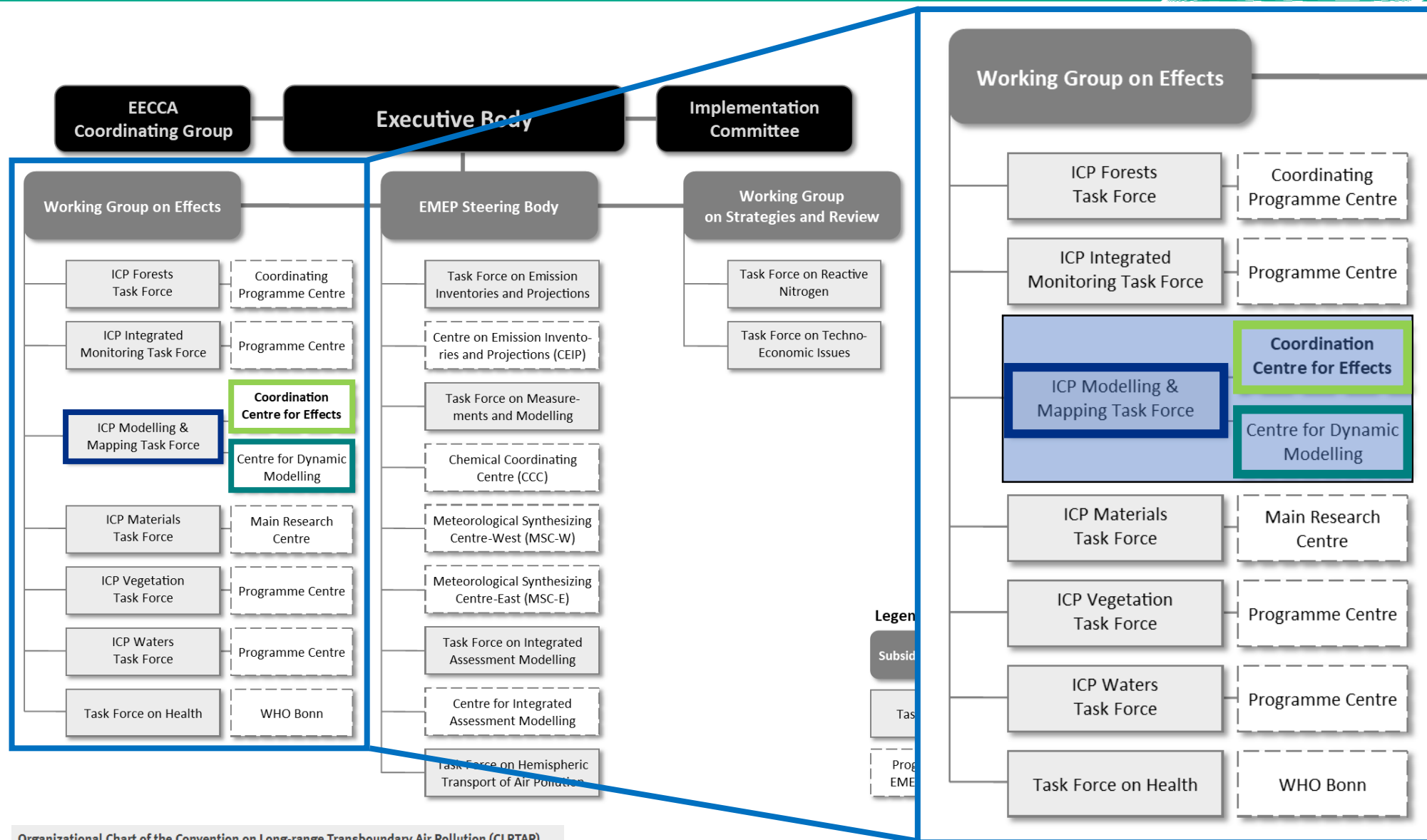
[filip.moldan@ivl.se](mailto:filip.moldan@ivl.se)

# ICP M&M and designated centre within the CLRTAP until 2019



Organizational Chart of the Convention on Long-range Transboundary Air Pollution (CLRTAP)  
Source: UNECE modified by C. Loran

# ICP M&M and designated centres within the CLRTAP from 2020



Organizational Chart of the Convention on Long-range Transboundary Air Pollution (CLRTAP)  
Source: UNECE modified by C. Loran

# ICP M&M and designated centres: who is who ?

## CCE – Coordination Centre for Effects

✉ [cce@uba.de](mailto:cce@uba.de)

German Environment Agency

Department II 4.3

Air Pollution Control and Terrestrial Ecosystems

Wörlitzer Platz 1 - 06844 Dessau

Germany

**Umwelt  
Bundesamt**

## ICP M&M – International Cooperative Programme on Modelling and Mapping

Chair: Alice James Casas, ✉ [alice.james@ineris.fr](mailto:alice.james@ineris.fr)

French National Institute for Industrial Environment and Risks

Department of Hazards and Impact on Living Organisms

Parc Tech. ALATA, BP2 - 60550 Verneuil-en-Halatte

France

**INERIS**

controlling risks  
for sustainable development

ICP Modelling &  
Mapping Task Force

**Coordination  
Centre for Effects**

Centre for Dynamic  
Modelling

## CDM – Centre for Dynamic Modelling

✉ [filip.moldan@ivl.se](mailto:filip.moldan@ivl.se)

IVL Swedish Environmental Research Institute

Valhallavägen 81 - 114 27 Stockholm

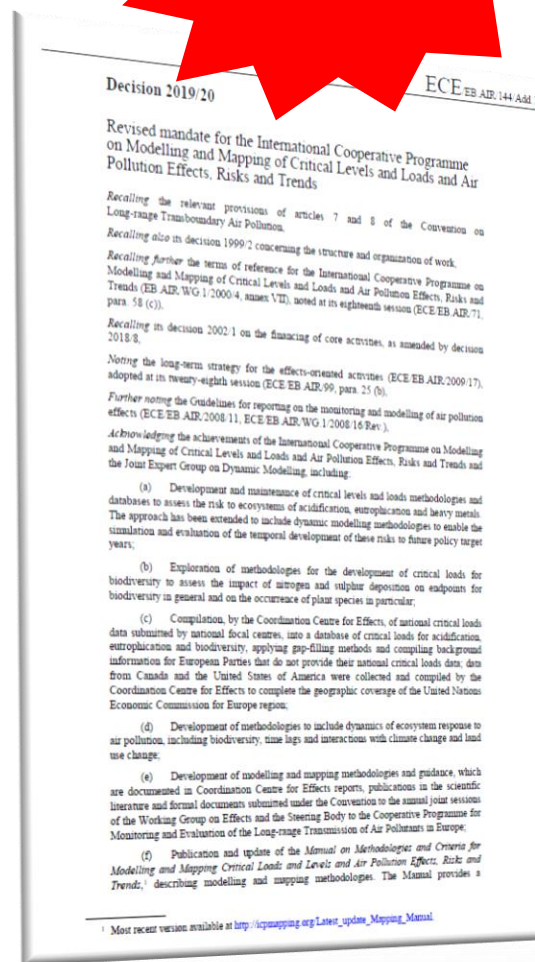
Sweden

**@ivl**  
Swedish Environmental  
Research Institute

**NEW !**

The International Cooperative Programme on Modelling and Mapping of Critical Levels and Loads and Air Pollution Effects, Risks and Trends will continue to provide the Working Group on Effects and the Executive Body and other subsidiary bodies with comprehensive information on:

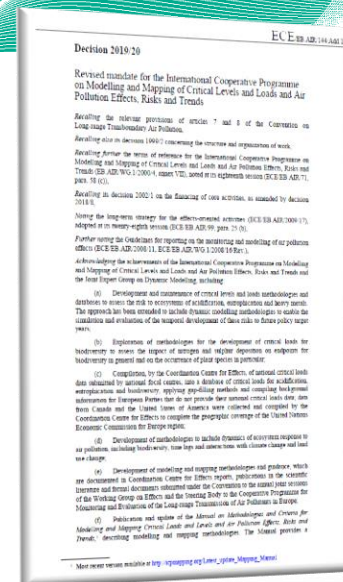
- critical levels and loads and their exceedances for selected pollutants;
- the development and application of other methods for effects-based approaches;
- and the modelling and mapping of the present status and trends in impacts of air pollution.





# ICP M&M mandate – common functions of TF ; CCE ; CDM

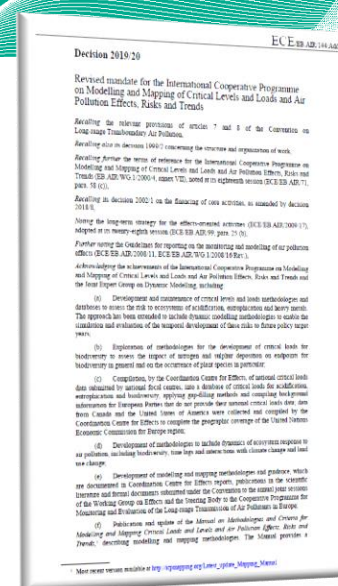
- (a) Collaborate with and provide guidance to national focal centres with comprehensive information on critical levels and loads and risk of exceedance, modelling and mapping of status and trends
- (b) Organize annual meetings and workshops to share knowledge
- (c) Carry out tasks adopted in the science-related part of the workplan within WGE and EB CLRTAP framework
- (d) Support the WGE, the WGSR and the TFIAM with scientific advice regarding the use and interpretation of data and modelling methodologies for critical levels and loads
- (e) Collaborate with other ICPs to develop understanding of dose-response relationships for terrestrial and aquatic ecosystems
- (f) Collaborate with CIAM, MSC-W, MSC-E for the purpose of risk exceedance maps
- (g) Carry out development and application of methods for effect-based approaches
- (h) Facilitate and be an entry point for cooperation between ca. the CLRTAP and exterior bodies/research groups.



Decision 2019/20  
(ECE/EB.AIR/144/Add.1)

# ICP M&M mandate – The Programme Task Force (lead : France)

- (a) **Plan, organize and evaluate the Programme's activities; review and assess methodologies and databases on critical levels and loads, and their exceedances and (trends of) the risk of impacts on suitable indicators for terrestrial and aquatic ecosystems' health;**
- (b) **Document modelling and mapping methodologies in manuals**
- (c) **Make recommendations regarding further development of effect-based approaches and future modelling and mapping requirements.**

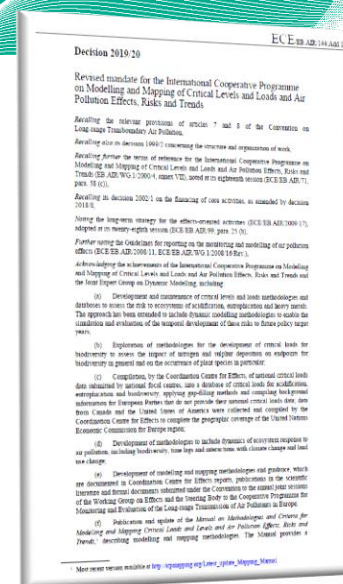


Decision 2019/20  
(ECE/EB.AIR/144/Add.1)

➤ **This should be done by communicating with participating experts in accordance with the biennial WP**

# ICP M&M mandate – The Coordination Centre for Effects (host : UBA, DE)

- Effects-oriented scientific work: the Critical Loads tutor
  - Develop and implement databases for calculation of CL, their exceedances and their mapping
  - Maintain and update relevant databases
  - Produce information and data necessary for implementation of the Convention and its Protocols in relation to indicators for natural ecosystems' health, including CL and their exceedances.
  - Apply methods for effects-based approaches, including dynamic modelling and the modelling of impacts on suitable indicators of biodiversity;
- Cooperation and promotion of dynamic work within the Convention
  - Conduct periodic training sessions and workshops to assist NFCs in their work;
  - Support the development of dynamic models describing the response over time of suitable indicators for biodiversity, in collaboration with other ICPs and the CDM;

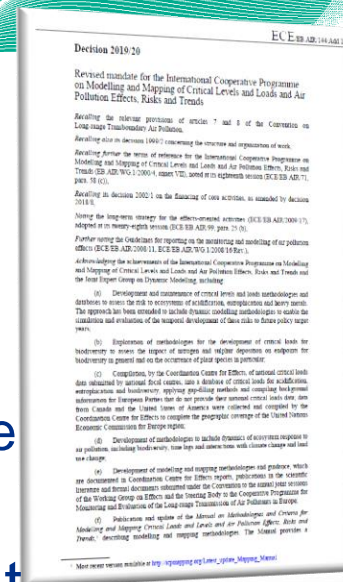


Decision 2019/20  
(ECE/EB.AIR/144/Add.1)



# ICP M&M mandate – The Centre for Dynamic Modelling (host : IVL, SE)

- Effects-oriented scientific work
  - Develop methods focusing on Dynamic Modelling to complement ecosystem effect assessment work
  - Suitable indicators of biodiversity using dynamic models that can be utilized for calculating CL
- The common WGE website: WGE work from one entry point
  - Carry out the development and maintenance of the website;
- Cooperation and promotion of dynamic work within the Convention
  - Facilitate cooperation between the WGE and non-Convention research groups and organizations
  - Promote dynamic work between Parties and bodies within the CLRTAP for the purpose of its work on DM;
  - Provide links between long-term monitoring and dynamic model development groups within the Convention.



Decision 2019/20  
(ECE/EB.AIR/144/Add.1)

*Thank you for your attention*

**Contact**

[cce@uba.de](mailto:cce@uba.de)

[filip.moldan@ivl.se](mailto:filip.moldan@ivl.se)

[alice.james@ineris.fr](mailto:alice.james@ineris.fr)