

Konzentrationen von SO₂, NO₂, O₃ und PM₁₀ aus dem Luftmessnetz des Umweltbundesamtes

Mai 2008

Basis der Statistik sind Halbstundenwerte kontinuierlich registrierender Messgeräte. Die 5-jährige Monatsstatistik berücksichtigt alle Halbstundenwerte aus dem jeweiligen Monat der vorangegangenen 5 Jahre.

Die Nachweisgrenzen sind: SO₂ 0.2 µg/m³, NO₂ 0.3 µg/m³ Ozon 2 µg/m³. Die Messwerte der Gase sind auf 20 °C bezogen, für PM₁₀ auf 0 °C.

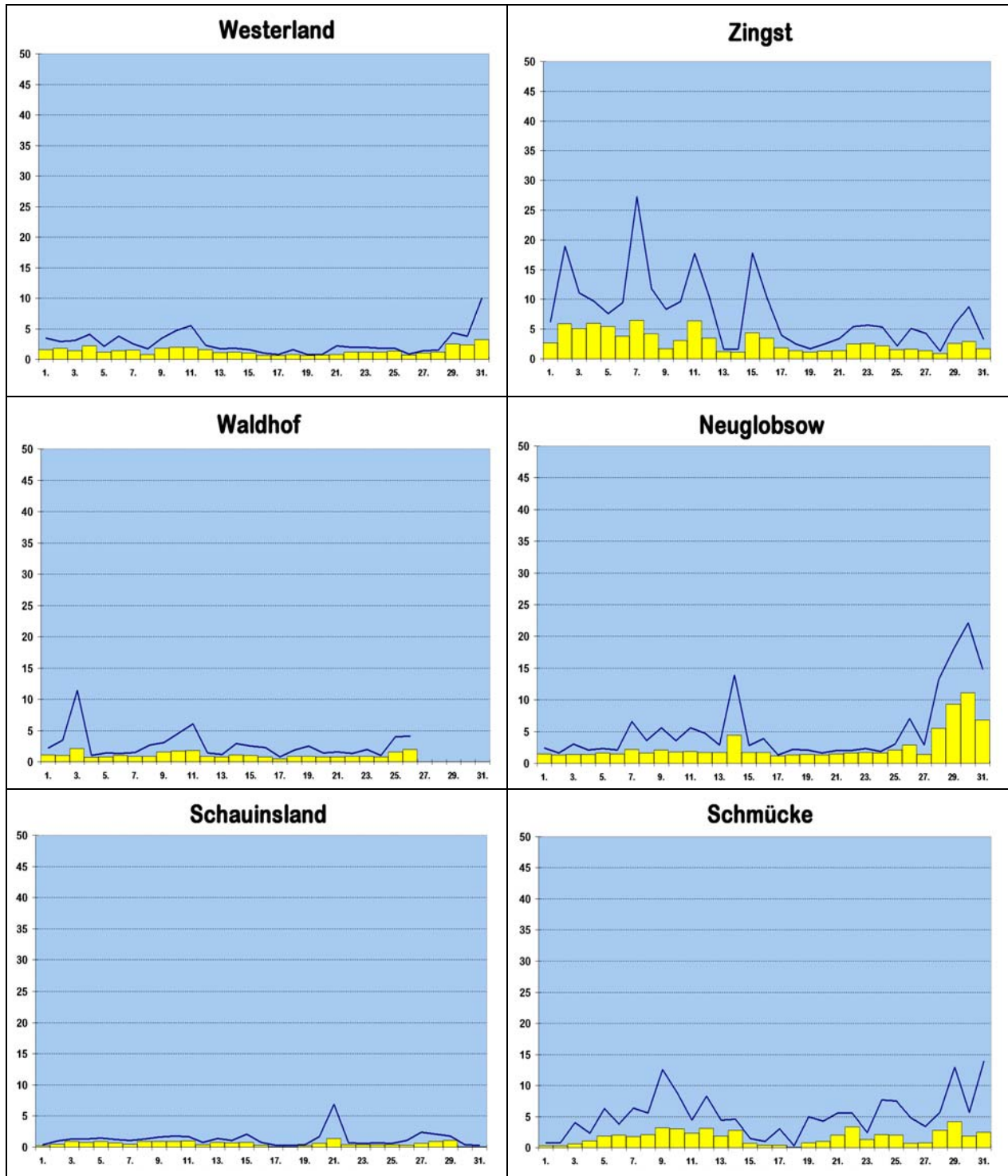
Schwefeldioxid

in $\mu\text{g}/\text{m}^3$, bezogen auf 20 °C

| | | Wester- land | Zingst | Neu- globso w | Waldhof | Schmücke | Schau- insland |
|-----------------|--------------------------|-----------------|--------|---------------------|---------|----------|-------------------|
| Tagesmittel | 1. | 1.6 | 2.7 | 1.5 | 1.1 | 0.3 | 0.2 |
| | 2. | 1.8 | 5.9 | 1.3 | 1.0 | 0.3 | 0.5 |
| | 3. | 1.4 | 5.1 | 1.4 | 2.1 | 0.6 | 0.9 |
| | 4. | 2.2 | 6.0 | 1.4 | 0.7 | 1.1 | 0.8 |
| | 5. | 1.2 | 5.4 | 1.6 | 0.8 | 1.9 | 0.9 |
| | 6. | 1.4 | 3.8 | 1.5 | 1.0 | 2.0 | 0.7 |
| | 7. | 1.5 | 6.5 | 2.2 | 0.9 | 1.8 | 0.5 |
| | 8. | 0.8 | 4.2 | 1.6 | 0.9 | 2.1 | 0.9 |
| | 9. | 1.8 | 1.7 | 2.1 | 1.6 | 3.2 | 0.9 |
| | 10. | 2.0 | 3.1 | 1.8 | 1.7 | 3.0 | 0.9 |
| | 11. | 2.0 | 6.4 | 1.9 | 1.8 | 2.3 | 1.0 |
| | 12. | 1.6 | 3.5 | 1.7 | 0.9 | 3.1 | 0.4 |
| | 13. | 1.1 | 1.2 | 1.7 | 0.8 | 1.9 | 0.8 |
| | 14. | 1.2 | 1.1 | 4.4 | 1.1 | 2.8 | 0.7 |
| | 15. | 1.0 | 4.4 | 1.7 | 1.0 | 0.7 | 0.8 |
| | 16. | 0.6 | 3.5 | 1.7 | 0.8 | 0.4 | 0.3 |
| | 17. | 0.6 | 1.9 | 1.2 | 0.5 | 0.4 | 0.1 |
| | 18. | 0.8 | 1.4 | 1.3 | 0.9 | 0.1 | 0.1 |
| | 19. | 0.6 | 1.1 | 1.4 | 0.9 | 0.8 | 0.2 |
| | 20. | 0.7 | 1.3 | 1.3 | 0.8 | 1.0 | 0.6 |
| | 21. | 0.8 | 1.4 | 1.5 | 0.8 | 2.0 | 1.4 |
| | 22. | 1.2 | 2.5 | 1.6 | 0.9 | 3.3 | 0.4 |
| | 23. | 1.2 | 2.6 | 1.7 | 0.9 | 1.3 | 0.4 |
| | 24. | 1.2 | 2.2 | 1.6 | 0.8 | 2.1 | 0.4 |
| | 25. | 1.3 | 1.5 | 2.1 | 1.6 | 2.0 | 0.4 |
| | 26. | 0.7 | 1.6 | 2.9 | 2.0 | 0.7 | 0.3 |
| | 27. | 1.0 | 1.4 | 1.4 | - | 0.8 | 0.6 |
| | 28. | 1.2 | 0.9 | 5.5 | - | 2.8 | 0.9 |
| | 29. | 2.5 | 2.6 | 9.3 | - | 4.2 | 1.1 |
| | 30. | 2.4 | 2.9 | 11.1 | - | 1.9 | 0.1 |
| | 31. | 3.2 | 1.7 | 6.8 | - | 2.5 | 0.1 |
| Monatsstatistik | Monatsmittel | 1.4 | 2.9 | 2.6 | 1.1 | 1.7 | 0.6 |
| | Maximales Tagesmittel | 3.2 | 6.5 | 11.1 | 2.1 | 4.2 | 1.4 |
| | Median | 1.2 | 1.9 | 1.6 | 0.8 | 1.3 | 0.5 |
| | 98-Perzentil | 3.7 | 10.3 | 13.2 | 3.4 | 5.7 | 1.7 |
| | 5-jähr. Monatsmittel | 1.2 | 2.0 | 0.8 | 1.1 | 1.2 | 1.0 |
| | 5-jähr. max. Tagesmittel | 3.8 | 6.4 | 5.6 | 3.8 | 7.3 | 5.0 |

Schwefeldioxid

in $\mu\text{g}/\text{m}^3$, bezogen auf 20 °C



Tagesmittel
 Tagesmaxima

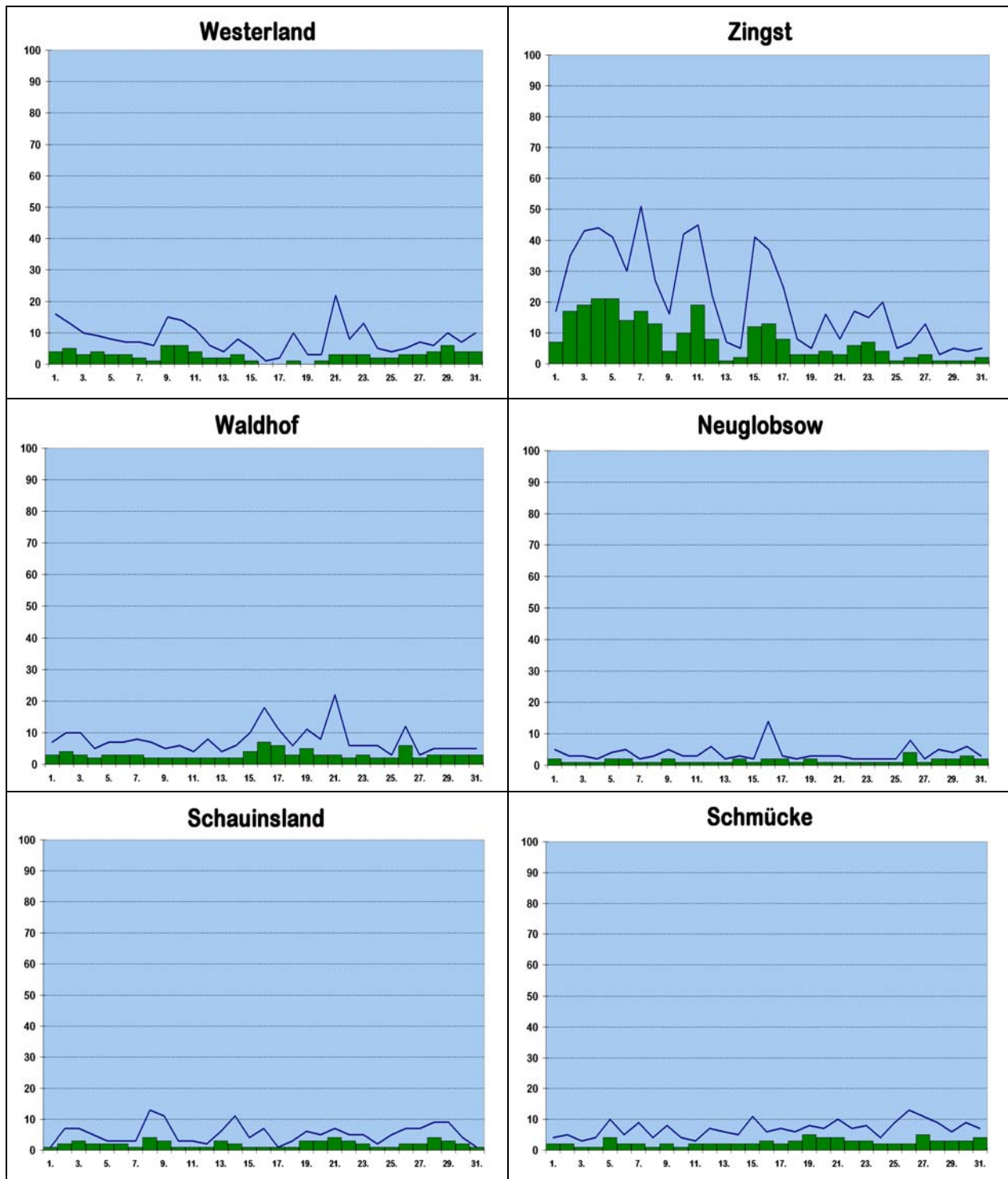
Stickstoffdioxid

in $\mu\text{g}/\text{m}^3$, bezogen auf 20 °C

| | | Westerland | Zingst | Neuglobsow | Waldhof | Schmücke | Schauinsland |
|-----------------|--------------------------|------------|--------|------------|---------|----------|--------------|
| Tagesmittel | 1. | 4 | 7 | 2 | 3 | 2 | 1 |
| | 2. | 5 | 17 | 1 | 4 | 2 | 2 |
| | 3. | 3 | 19 | 1 | 3 | 1 | 3 |
| | 4. | 4 | 21 | 1 | 2 | 1 | 2 |
| | 5. | 3 | 21 | 2 | 3 | 4 | 2 |
| | 6. | 3 | 14 | 2 | 3 | 2 | 2 |
| | 7. | 2 | 17 | 1 | 3 | 2 | 1 |
| | 8. | 1 | 13 | 1 | 2 | 1 | 4 |
| | 9. | 6 | 4 | 2 | 2 | 2 | 3 |
| | 10. | 6 | 10 | 1 | 2 | 1 | 1 |
| | 11. | 4 | 19 | 1 | 2 | 2 | 1 |
| | 12. | 2 | 8 | 1 | 2 | 2 | 1 |
| | 13. | 2 | 1 | 1 | 2 | 2 | 3 |
| | 14. | 3 | 2 | 2 | 2 | 2 | 2 |
| | 15. | 1 | 12 | 1 | 4 | 2 | 1 |
| | 16. | 0 | 13 | 2 | 7 | 3 | 1 |
| | 17. | 0 | 8 | 2 | 6 | 2 | 1 |
| | 18. | 1 | 3 | 1 | 3 | 3 | 1 |
| | 19. | 0 | 3 | 2 | 5 | 5 | 3 |
| | 20. | 1 | 4 | 1 | 3 | 4 | 3 |
| | 21. | 3 | 3 | 1 | 3 | 4 | 4 |
| | 22. | 3 | 6 | 1 | 2 | 3 | 3 |
| | 23. | 3 | 7 | 1 | 3 | 3 | 2 |
| | 24. | 2 | 4 | 1 | 2 | 2 | 1 |
| | 25. | 2 | 1 | 1 | 2 | 2 | 1 |
| | 26. | 3 | 2 | 4 | 6 | 2 | 2 |
| | 27. | 3 | 3 | 1 | 2 | 5 | 2 |
| | 28. | 4 | 1 | 2 | 3 | 3 | 4 |
| | 29. | 6 | 1 | 2 | 3 | 3 | 3 |
| | 30. | 4 | 1 | 3 | 3 | 3 | 2 |
| | 31. | 4 | 2 | 2 | 3 | 4 | 1 |
| Monatsstatistik | Monatsmittel | 3 | 8 | 2 | 3 | 3 | 2 |
| | Maximales Tagesmittel | 6 | 21 | 4 | 7 | 5 | 4 |
| | Median | 3 | 4 | 1 | 3 | 2 | 1 |
| | 98-Perzentil | 10 | 37 | 5 | 9 | 8 | 6 |
| | 5-jähr. Monatsmittel | 5 | 8 | 4 | 6 | 6 | 3 |
| | 5-jähr. max. Tagesmittel | 14 | 24 | 11 | 14 | 12 | 13 |

Stickstoffdioxid

in $\mu\text{g}/\text{m}^3$, bezogen auf 20 °C



■ Tagesmittel — Tagesmaxima

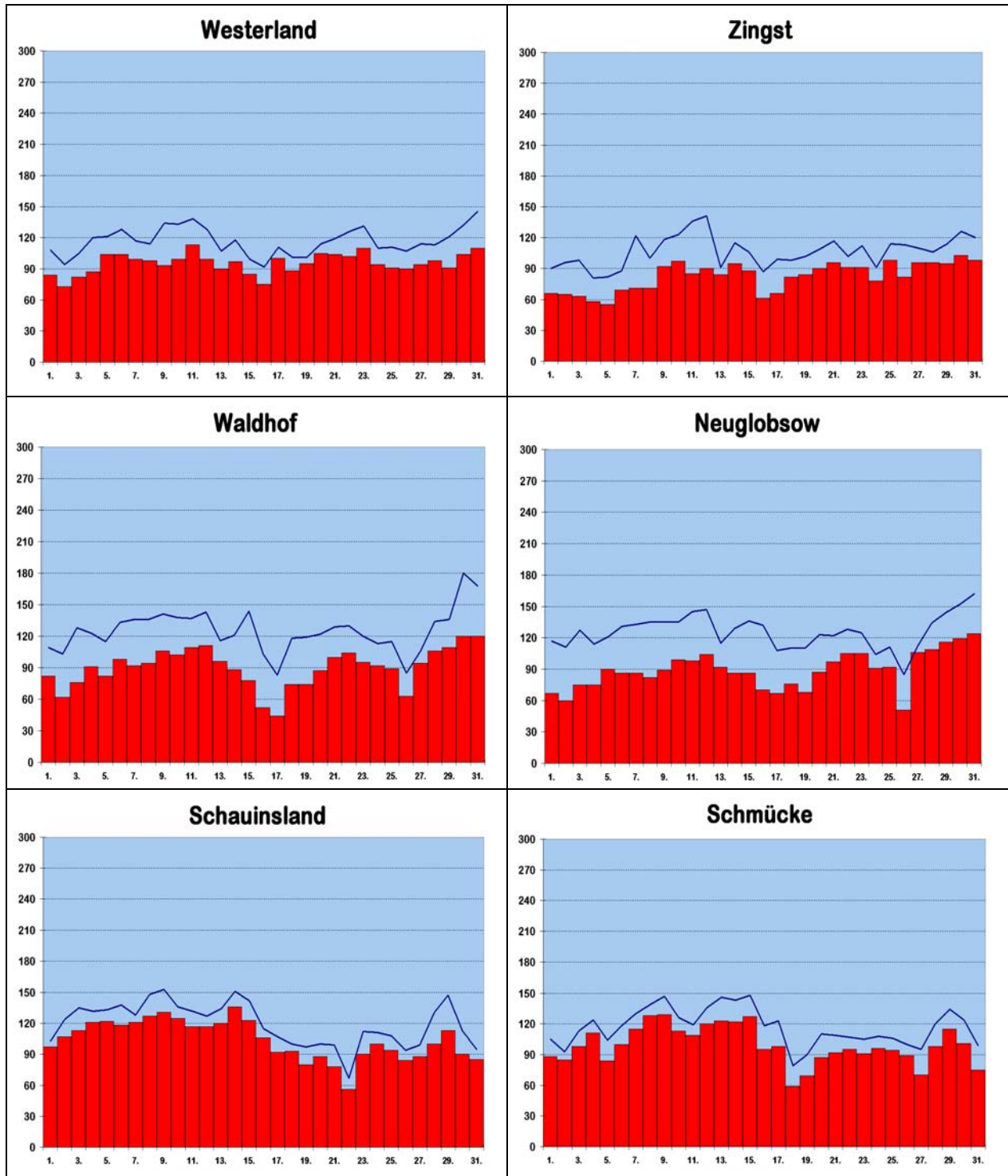
Ozon

in $\mu\text{g}/\text{m}^3$, bezogen auf 20 °C

| | | Wester- land | Zingst | Neu- globow | Waldhof | Schmücke | Schau- insland |
|-----------------|--------------------------|-----------------|--------|----------------|---------|----------|-------------------|
| Tagesmittel | 1. | 84 | 66 | 67 | 82 | 88 | 97 |
| | 2. | 73 | 65 | 60 | 62 | 85 | 107 |
| | 3. | 82 | 63 | 75 | 76 | 98 | 113 |
| | 4. | 87 | 58 | 75 | 91 | 111 | 121 |
| | 5. | 104 | 55 | 90 | 82 | 84 | 122 |
| | 6. | 104 | 69 | 86 | 98 | 100 | 118 |
| | 7. | 99 | 71 | 86 | 92 | 115 | 121 |
| | 8. | 98 | 71 | 82 | 94 | 128 | 127 |
| | 9. | 93 | 92 | 89 | 106 | 129 | 131 |
| | 10. | 99 | 97 | 99 | 102 | 113 | 125 |
| | 11. | 113 | 85 | 98 | 109 | 109 | 117 |
| | 12. | 99 | 90 | 104 | 111 | 120 | 117 |
| | 13. | 90 | 84 | 92 | 96 | 123 | 120 |
| | 14. | 97 | 95 | 86 | 88 | 122 | 136 |
| | 15. | 85 | 88 | 86 | 78 | 127 | 123 |
| | 16. | 75 | 61 | 70 | 52 | 95 | 106 |
| | 17. | 100 | 66 | 67 | 44 | 98 | 92 |
| | 18. | 88 | 82 | 76 | 74 | 59 | 93 |
| | 19. | 95 | 84 | 68 | 74 | 69 | 80 |
| | 20. | 105 | 90 | 87 | 87 | 87 | 88 |
| | 21. | 104 | 96 | 97 | 100 | 92 | 78 |
| | 22. | 102 | 91 | 105 | 104 | 95 | 56 |
| | 23. | 110 | 91 | 105 | 95 | 91 | 90 |
| | 24. | 94 | 78 | 91 | 92 | 96 | 100 |
| | 25. | 91 | 98 | 92 | 89 | 94 | 94 |
| | 26. | 90 | 82 | 51 | 63 | 89 | 84 |
| | 27. | 94 | 96 | 106 | 94 | 70 | 88 |
| | 28. | 98 | 96 | 109 | 106 | 98 | 100 |
| | 29. | 91 | 95 | 116 | 109 | 115 | 113 |
| | 30. | 104 | 103 | 119 | 120 | 101 | 90 |
| | 31. | 110 | 98 | 124 | 120 | 75 | 85 |
| Monatsstatistik | Monatsmittel | 95 | 83 | 89 | 90 | 99 | 104 |
| | Maximales Tagesmittel | 113 | 103 | 124 | 120 | 129 | 136 |
| | Median | 96 | 85 | 96 | 93 | 100 | 105 |
| | 98-Perzentil | 131 | 121 | 144 | 141 | 138 | 142 |
| | Max. 1-Stundenmittel | 143 | 139 | 161 | 180 | 147 | 152 |
| | 5-jähr. Monatsmittel | 90 | 80 | 74 | 75 | 93 | 100 |
| | 5-jähr. max. Tagesmittel | 138 | 139 | 135 | 144 | 161 | 162 |

Ozon

in $\mu\text{g}/\text{m}^3$, bezogen auf 20 °C



■ Tagesmittel — Tagesmaxima

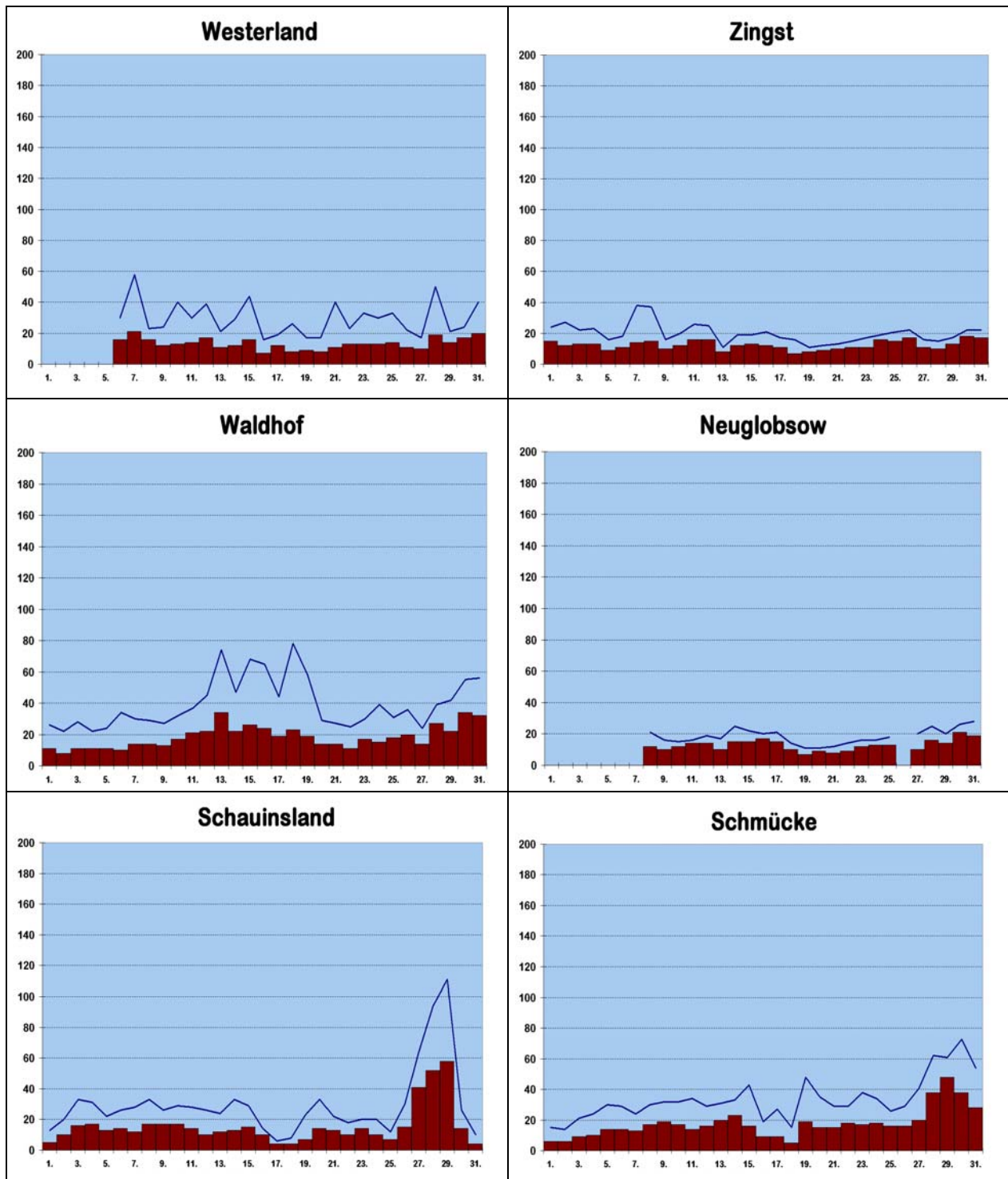
Feinstaub PM₁₀

in µg/m³, bezogen auf 0 °C

| | | Wester- land | Zingst | Neu- globso w | Waldhof | Schmücke | Schau- insland |
|-----------------|--------------------------|-----------------|--------|---------------------|---------|----------|-------------------|
| Tagesmittel | 1. | - | 15 | - | 11 | 6 | 5 |
| | 2. | - | 12 | - | 8 | 6 | 10 |
| | 3. | - | 13 | - | 11 | 9 | 16 |
| | 4. | - | 13 | - | 11 | 10 | 17 |
| | 5. | - | 9 | - | 11 | 14 | 13 |
| | 6. | 16 | 11 | - | 10 | 14 | 14 |
| | 7. | 21 | 14 | - | 14 | 13 | 12 |
| | 8. | 16 | 15 | 12 | 14 | 17 | 17 |
| | 9. | 12 | 10 | 10 | 13 | 19 | 17 |
| | 10. | 13 | 12 | 12 | 17 | 17 | 17 |
| | 11. | 14 | 16 | 14 | 21 | 14 | 14 |
| | 12. | 17 | 16 | 14 | 22 | 16 | 10 |
| | 13. | 11 | 8 | 10 | 34 | 20 | 12 |
| | 14. | 12 | 12 | 15 | 22 | 23 | 13 |
| | 15. | 16 | 13 | 15 | 26 | 16 | 15 |
| | 16. | 7 | 12 | 17 | 24 | 9 | 10 |
| | 17. | 12 | 11 | 15 | 19 | 9 | 4 |
| | 18. | 8 | 7 | 10 | 23 | 5 | 4 |
| | 19. | 9 | 8 | 7 | 19 | 19 | 7 |
| | 20. | 8 | 9 | 9 | 14 | 15 | 14 |
| | 21. | 11 | 10 | 8 | 14 | 15 | 13 |
| | 22. | 13 | 11 | 9 | 11 | 18 | 10 |
| | 23. | 13 | 11 | 12 | 17 | 17 | 14 |
| | 24. | 13 | 16 | 13 | 15 | 18 | 10 |
| | 25. | 14 | 15 | 13 | 18 | 16 | 7 |
| | 26. | 11 | 17 | - | 20 | 16 | 15 |
| | 27. | 10 | 11 | 10 | 14 | 20 | 41 |
| | 28. | 19 | 10 | 16 | 27 | 38 | 52 |
| | 29. | 14 | 13 | 14 | 22 | 48 | 58 |
| | 30. | 17 | 18 | 21 | 34 | 38 | 14 |
| | 31. | 20 | 17 | 19 | 32 | 28 | 4 |
| Monatsstatistik | Monatsmittel | 13 | 12 | 13 | 18 | 18 | 15 |
| | Maximales Tagesmittel | 21 | 18 | 21 | 34 | 48 | 58 |
| | Median | 13 | 12 | 12 | 16 | 15 | 12 |
| | 98-Perzentil | 32 | 23 | 24 | 50 | 54 | 62 |
| | 5-jähr. Monatsmittel | - | 14 | 15 | 17 | 13 | 15 |
| | 5-jähr. max. Tagesmittel | - | 43 | 52 | 67 | 50 | 61 |

PM₁₀

in µg/m³, bezogen auf 0 °C



■ Tagesmittel — Tagesmaxima