



Webinar with Delara Burkhardt (MEP, S&D) and the German Environment Agency
How to make packaging more recyclable

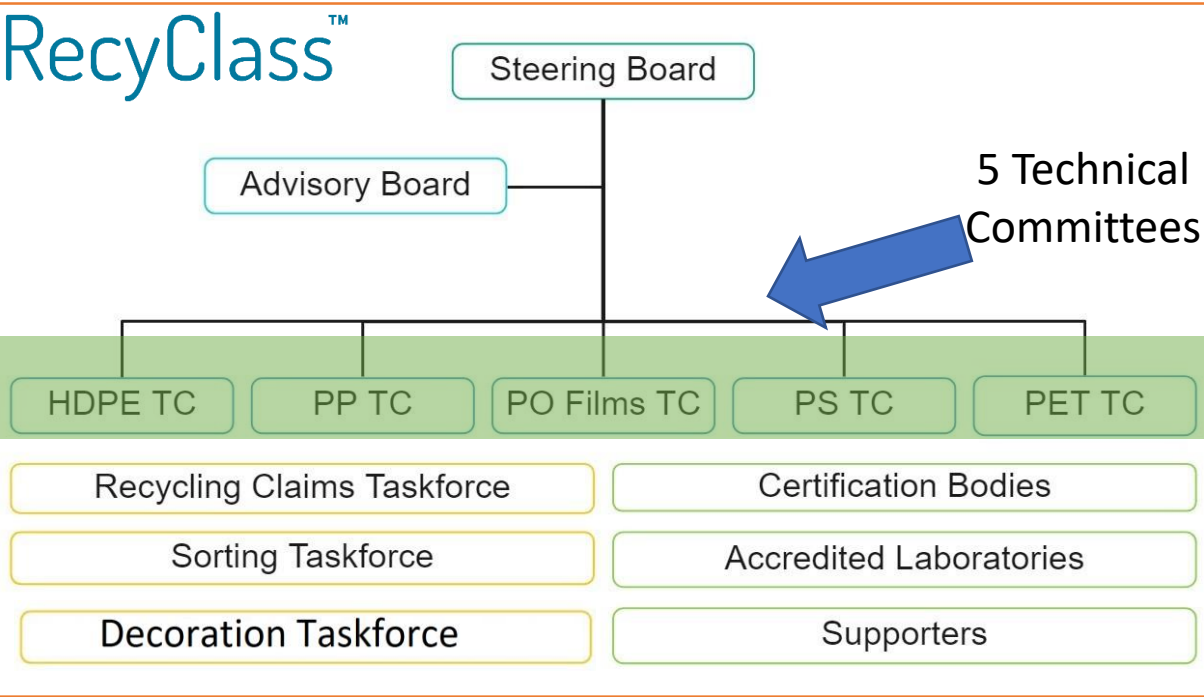
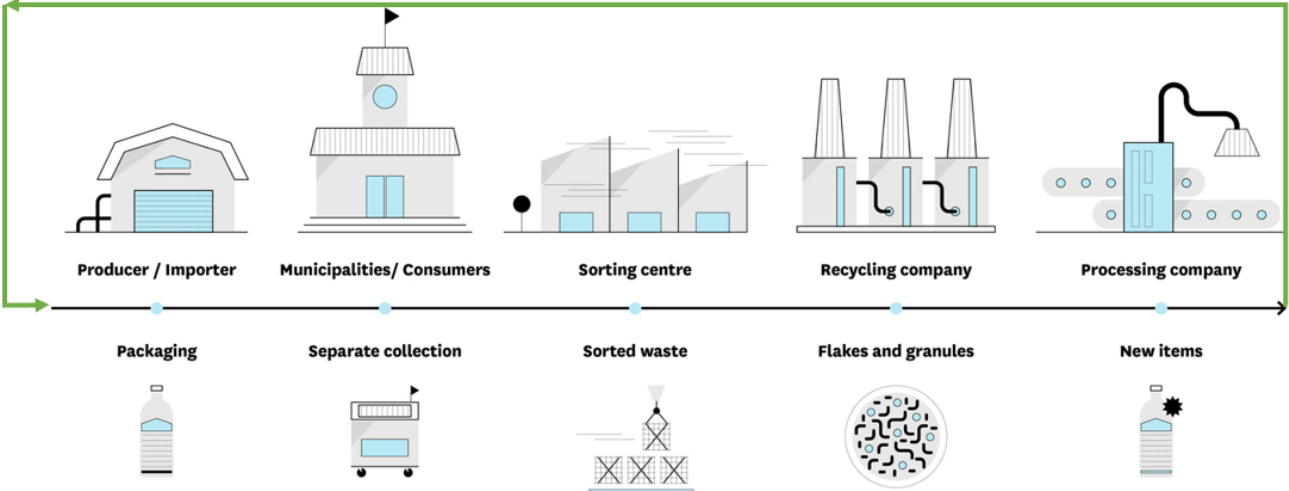


**Umwelt
Bundesamt**

Overview: Differences in sorting and recycling in Europe

Paolo Glerean
paolo.glerean@aliplastspa.it

Recycling is possible only if the supply chain exists



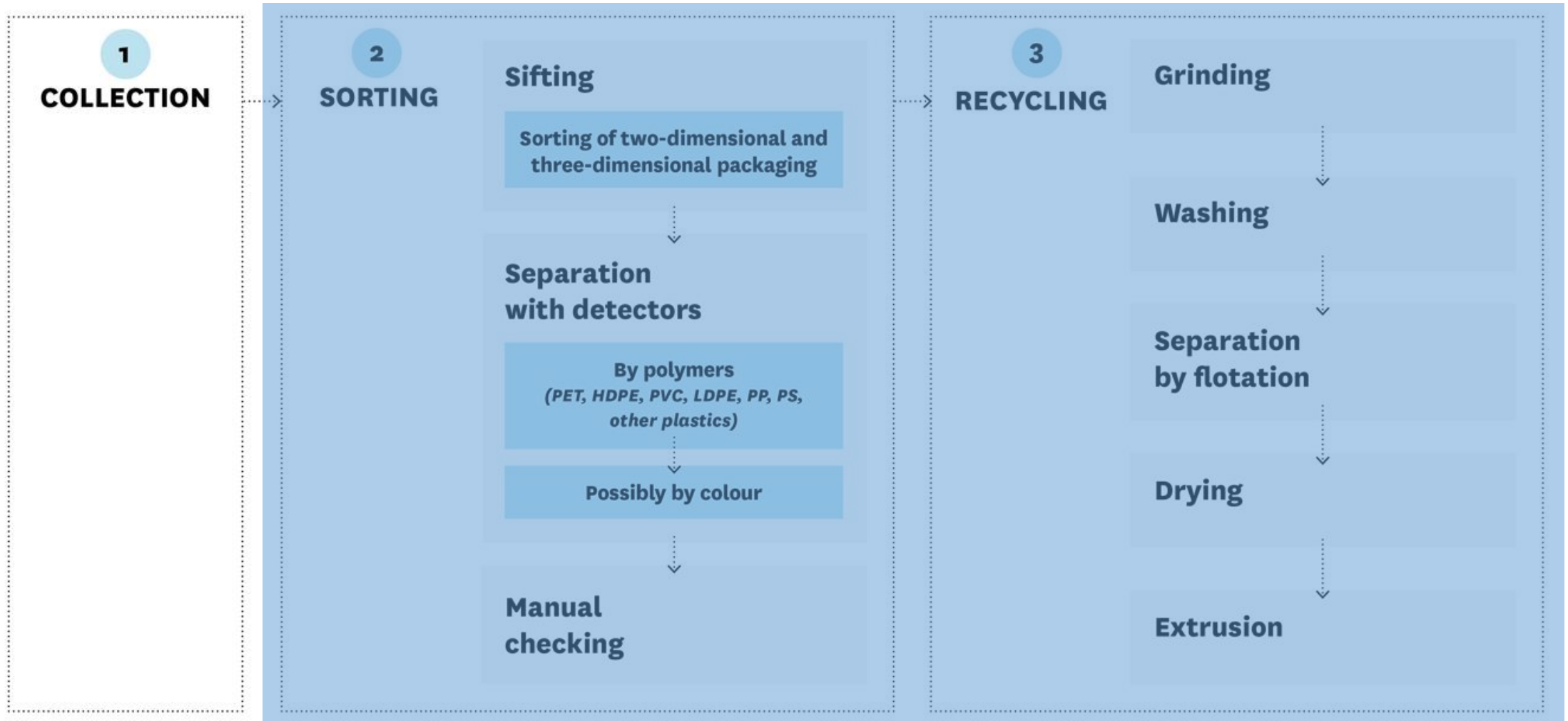
RecyClass members (50)

The importance of harmonised and scientific-based information

- **Harmonised Evaluation Protocols and Design Guidelines are essential**
 - ✓ Strengthens and gives credibility to the message;
 - ✓ Provides for effective communication with stakeholders;
 - ✓ Provides clear direction for design for recyclability policies within brands.



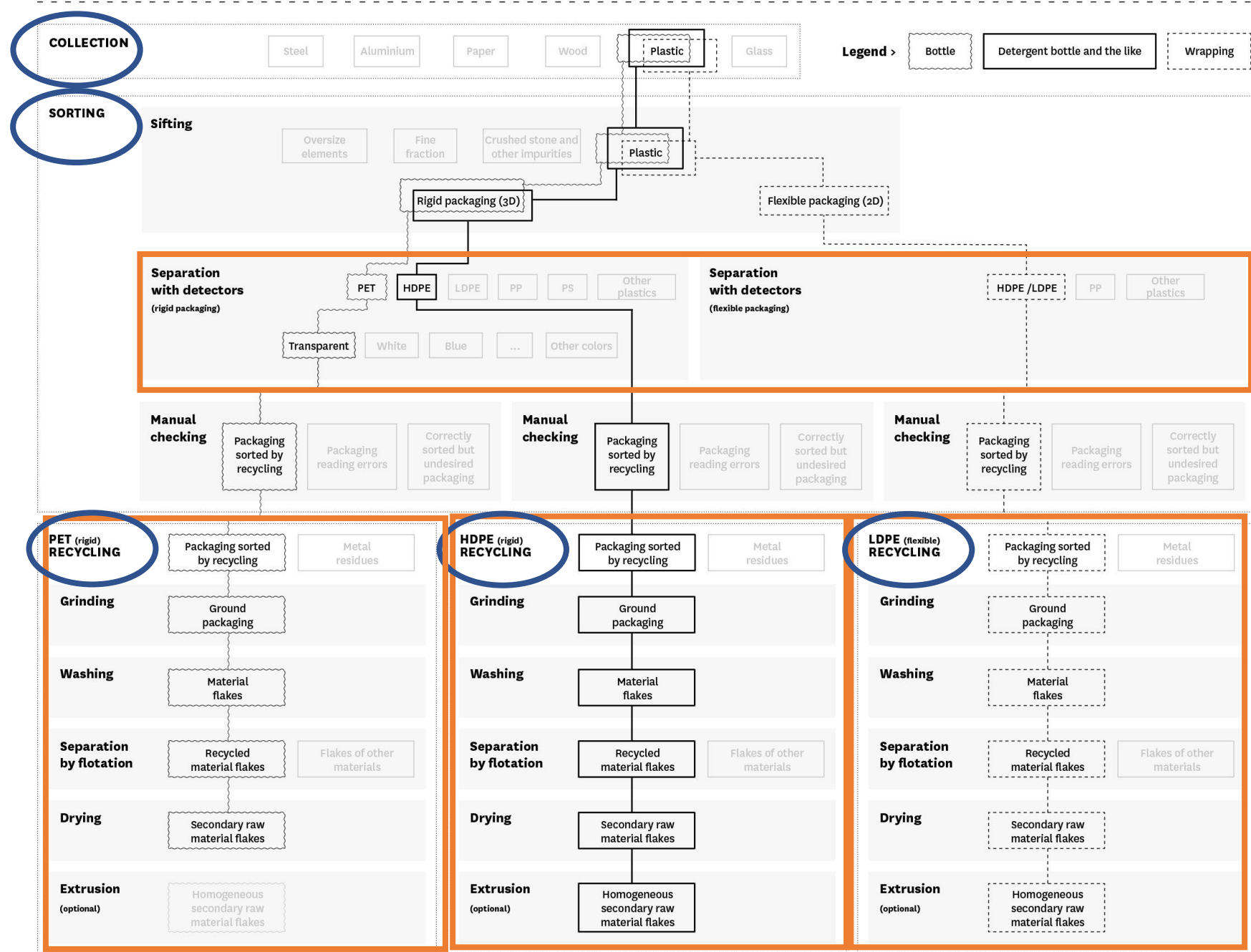
Illustrative diagram of an example of sorting and recycling process



All the European sorting lines are based on similar design and on NIR detector technologies

Differences are mainly due to the different collection systems and sorted waste streams produced:

- Sieve drums: hole size is averaging 50x50 mm (Germany and The Netherlands are mainly 20x20 mm);
- Setting operational parameters, as function of the quality of waste received and sorted streams produced
- NIR detectors: sequence and numbers can differ line by line on the base of the waste collected, the quality of waste processed and the sorted waste streams produced.
- Output streams:
 - 1) almost in all Countries sorting lines produce PET and HDPE streams;
 - 2) in several Member States PET bottles are sorted in 2 streams (clear/light blue and coloured PET bottles);
 - 3) In some Member States PP rigids, as well as PE flexibles are sorted separately.
 - 4) In few Member States PET trays are sorted (often with bottles, only in France the ones lidding films are sorted separately from January 2021)
 - 5) In some Member States, mixed polyolefin (flexibles) and mixed plastics (rigids) are sorted and recycled (injection molding applications)



1. DRY



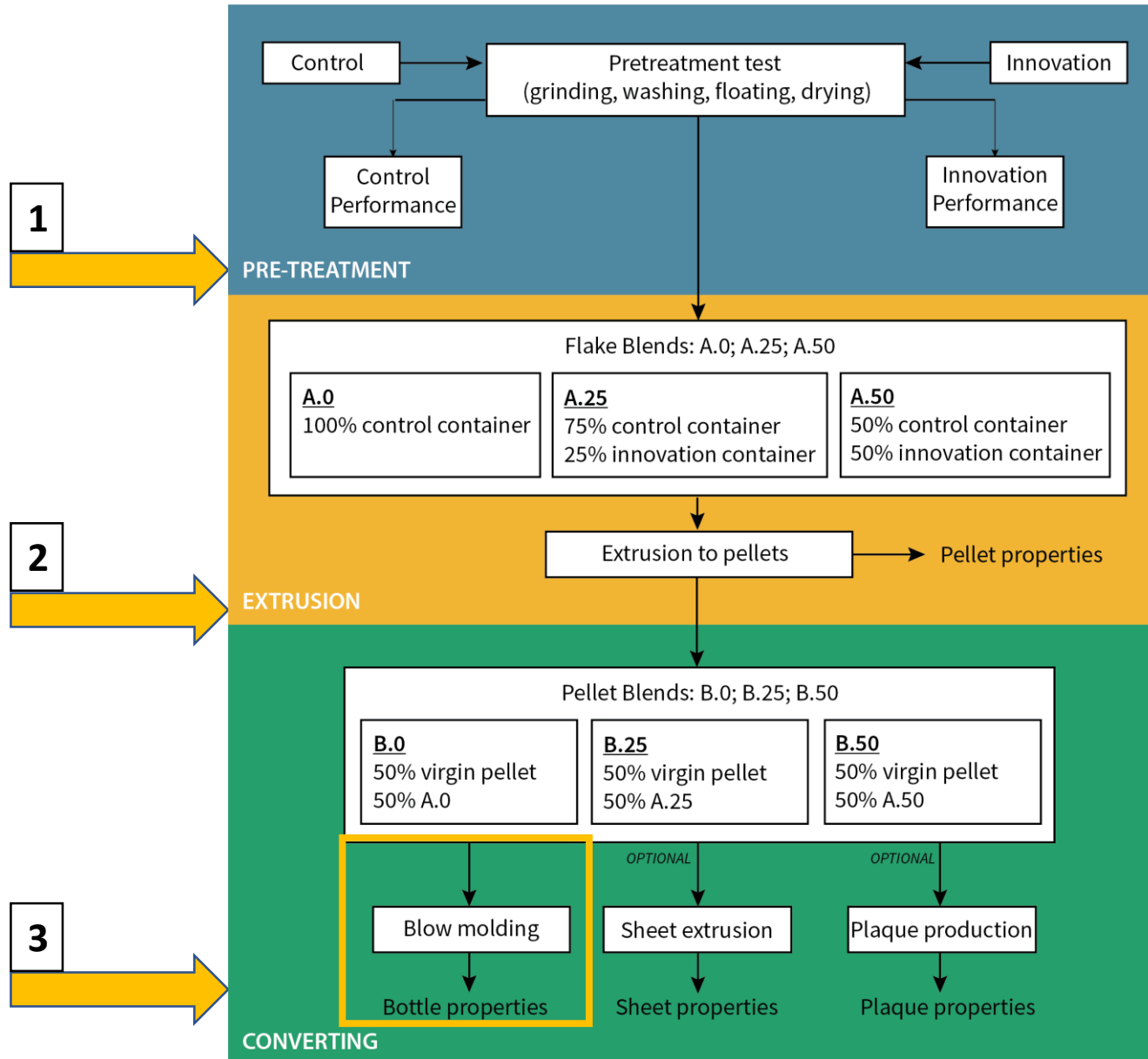
2. WET



3. REFINEMENT



How assess recyclability in a standard way?



Recyclability Protocol for HDPE

- **Pre-treatments**

Input:

10 kg innovation

25 kg control

- **Extrusion and pellet characterization**

Input:

3 flake blends of control and innovation flakes
(**with 0, 25% and 50% of innovation**)

- **Converting** (50% dilution with virgin)

Input:

3 pellet blends of control and innovation pellets
(**with 0, 12,5% and 25% of innovation**)

The background of the entire image is a dense, light blue-tinted collage of various plastic waste items, including bottles, caps, and crumpled plastic, creating a textured, environmental theme.

Thank you
for your attention

www.recyclclass.eu

info@recyclclass.eu

RecyClassTM

