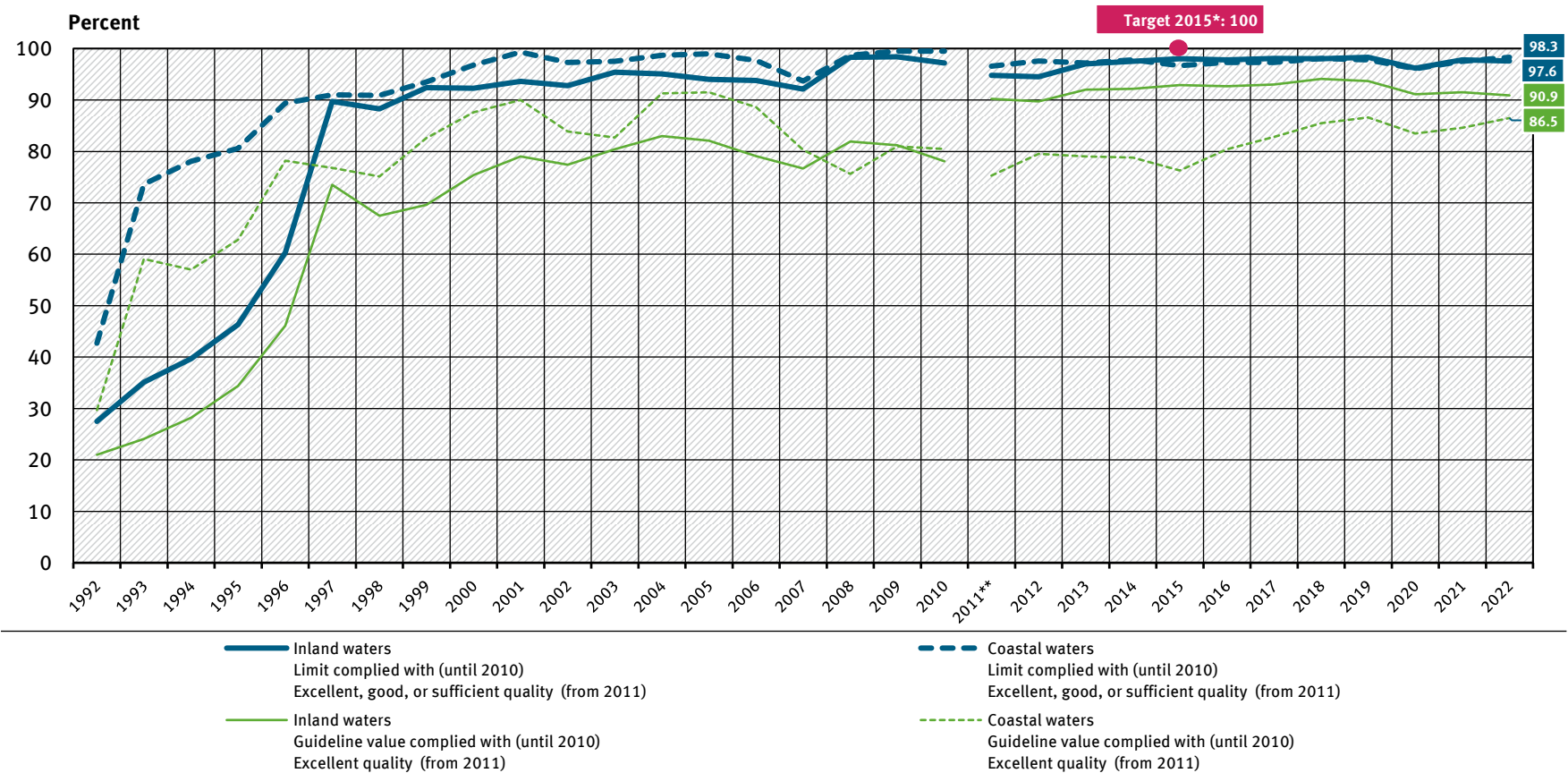


Percentage of German bathing waters that comply with the provisions of the Bathing Water Directive or have 'excellent' bathing water quality



* Excellent, good, or sufficient quality (EC Bathing Water Directive)
** Change in assessment: Since 2011 there has been a new quality scale for bathing waters in line with the new European Bathing Water Directive (2006/7/EC)

Source: European Commission 2023, Quality of Bathing Waters, Bathing season 2022