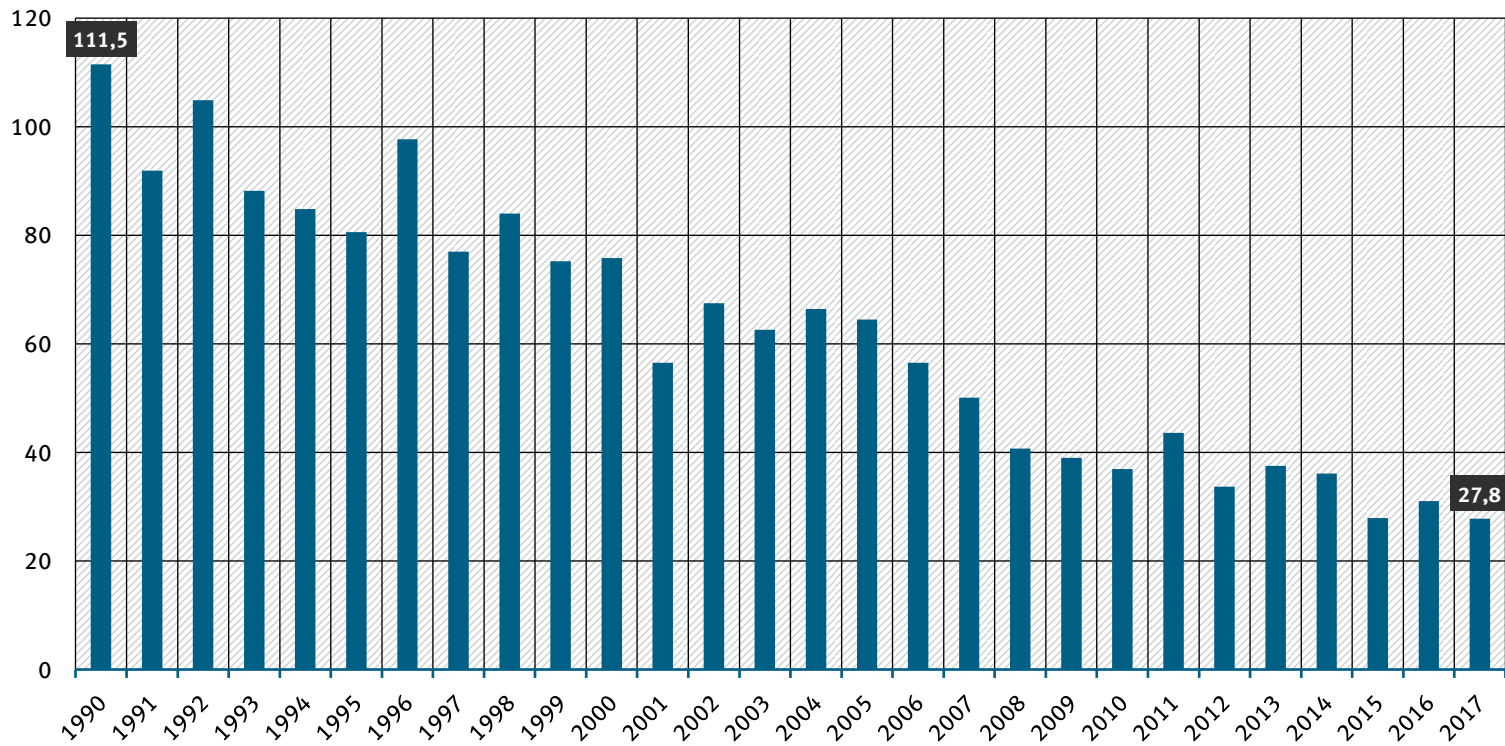


# Trend der modellierten Cadmium-Gesamtdeposition in Deutschland

Deposition (Gramm/Quadratkilometer pro Jahr)



Quelle: EMEP status reports on heavy metals 2016-2019 (<http://en.msceast.org/index.php/publications/reports>)

EMEP CCC-Report 1/2016 (<https://projects.nilu.no/ccc/reports/cccr1-2016.pdf>)

EMEP status report 2/2015 ([http://en.msceast.org/reports/2\\_2015.pdf](http://en.msceast.org/reports/2_2015.pdf))