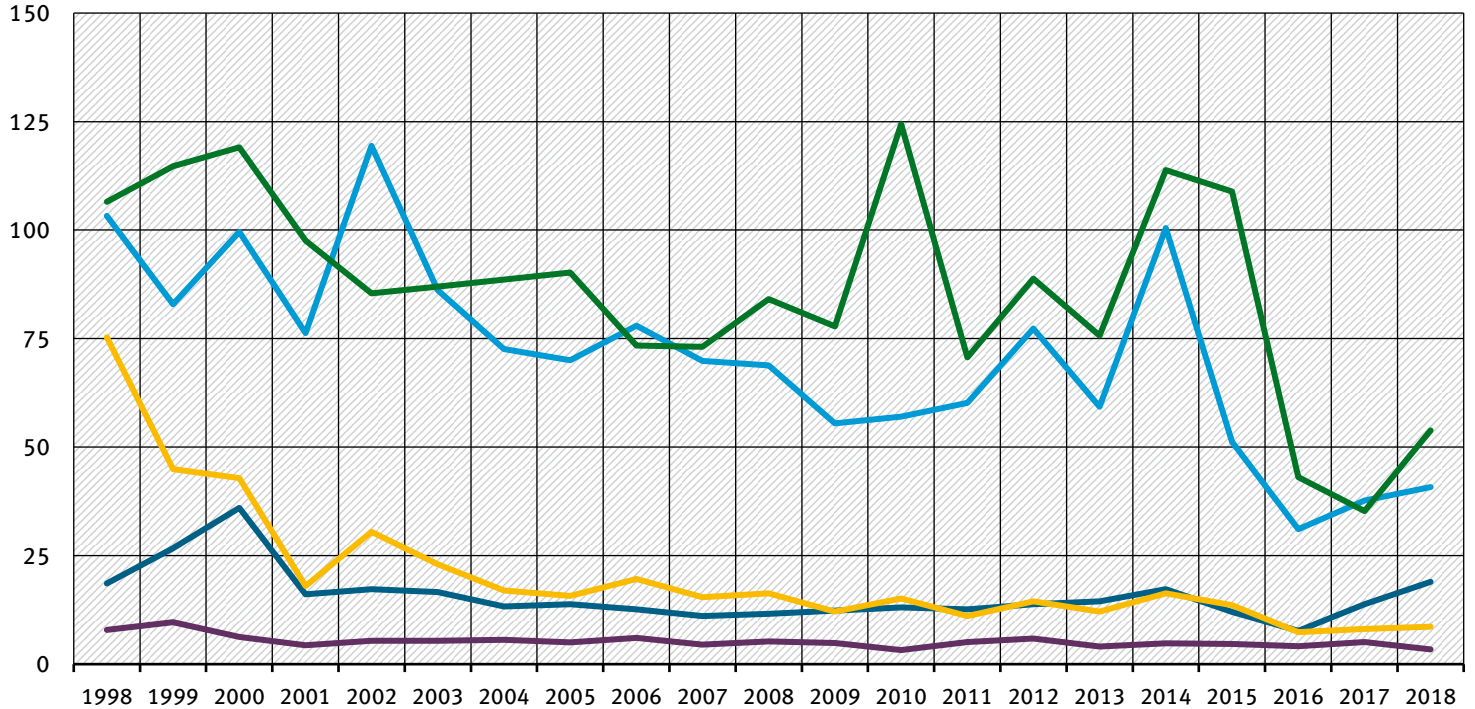


Nasse Depositionen von Quecksilber (Hg), Kobalt (Co), Cadmium (Cd), Arsen (As) und Chrom (Cr) an der UBA-Luftmessstelle Westerland

Deposition (Mikrogramm/Quadratmeter)



— Quecksilber

— Kobalt

— Cadmium

— Arsen

— Chrom