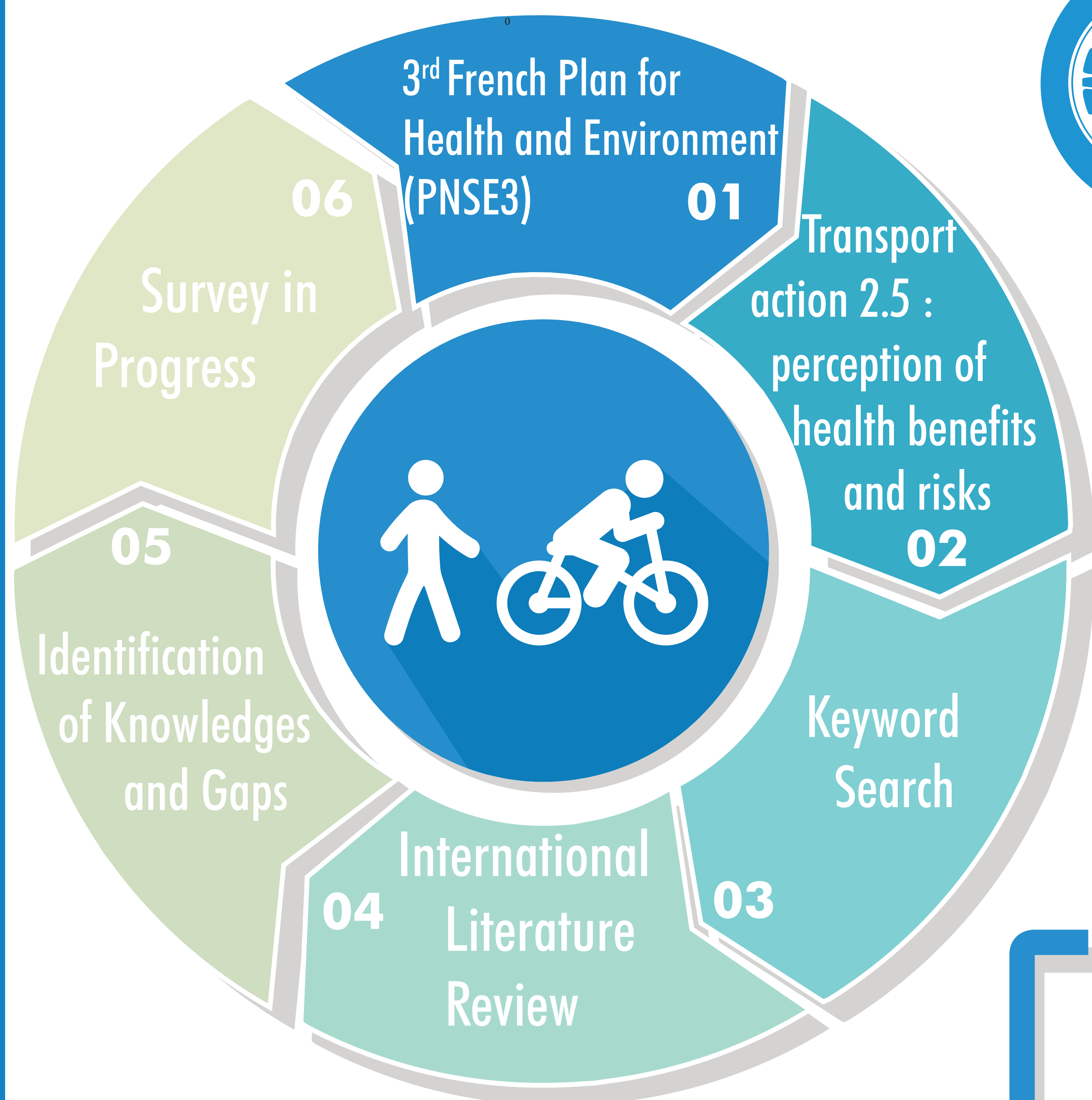


Factors For The Perception Of Active Modes Health Benefits And Risks

Francis PAPON (Université Paris-Est/AME-DEST-IFSTTAR) & Clément DUSONG (Université Paris-Est/AME-DEST-IFSTTAR)



PERCEPTION OF ACCIDENT RISKS

Individual Factors

- Psychobiological differences between age groups in risk perception
- Differentiated socialization to risk between men and women yields effects on perceived risks
- Subjectivity evolves with practice
- Perceived danger has a role in choice and use patterns

Environmental Factors

- Women are more sensitive to cycling facilities
- Mid-block facilities reassure
- Number of parked vehicles increases risk perception
- Double effect of motor vehicle volume and speed

Many accident risk perception studies provide information about this cycling barrier.

PERCEPTION OF HEALTH BENEFITS

Individual Factors

- Women are more sensitive to benefits
- Benefit perception differs by experience
- More an incentive for new users

Environmental Factors

- Infrastructure also participates in improving active mode image

Active mode benefits are less studied. Despite that benefits outweigh risks, the low number of works on benefits proves that active modes users are still considered as vulnerable users.

PERCEPTION OF POLLUTION RISKS

Individual Factors

- Perception of inhalation risks is a true social marker

Environmental Factors

- Pollutant perception constraints use
- Urban populations are more sensitive to pollution issues than those on the periphery or in rural areas

The pollution risk is an emerging issue and little research is produced on the perception of this risk.