



SUPPORTING LATIN AMERICA'S FIRST BICYCLE AVENUE IN BOGOTÁ, COLOMBIA

MANNHEIM, 19.09.2017

Sarah Schneider (GIZ), sarah.schneider@giz.de

Funding partners:



Implementing agencies:



Cities need support



Cities are at the forefront of efforts to tackle climate, producing over 75% of the world's GHG emissions.

Enormous investment is required in sustainable infrastructure to keep warming to below 2°C

\$1 ,000,000,000,000
between now and 2050 is needed across
all C40 cities

\$375,000,000,000
alone is needed before 2020

Barriers to Action

The most significant barrier to action by cities is **insufficient access to finance for urban infrastructure projects**, particularly for innovative projects addressing climate change.

This barrier is particularly severe in cities in the Global South, where limited capacity prevents cities from:

- Accurately costing and scoping projects, especially large infrastructure projects
- Designing self-supporting or profit-yielding climate change projects
- Understanding the business considerations necessary to allow private sector investment in projects
- Understanding what risks the private sector can or will take

C40 Cities Finance Facility

- Launched at the C40 Forum during COP21 in Paris in December 2015 by BMZ, C40 and IADB
- Overarching aim: Support C40 cities in developing and emerging countries to reduce greenhouse gas (GHG) emissions and increase climate resilience by mobilising finance for city-level climate action



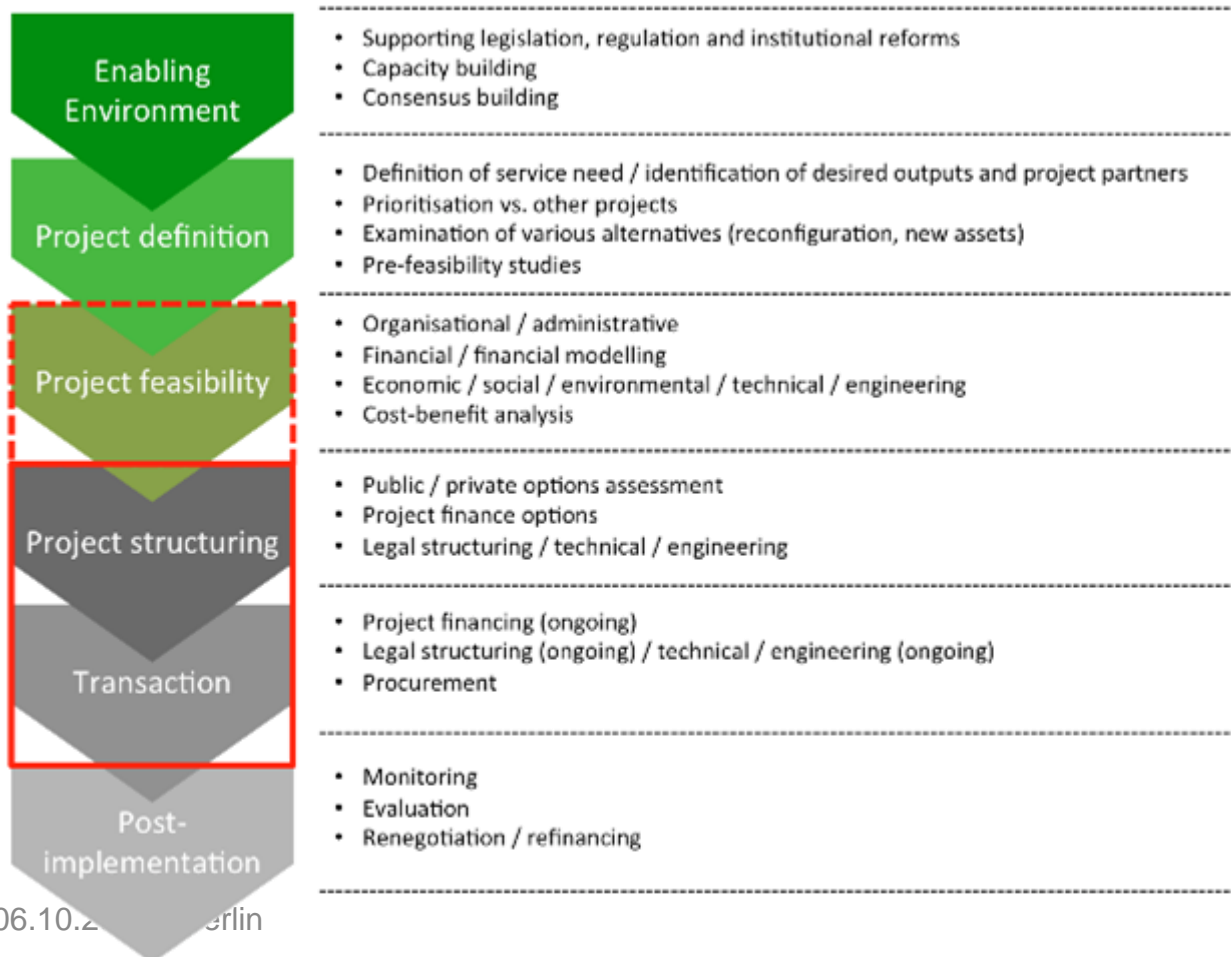
IMPACT

To support the development of **low-carbon** and **climate resilient infrastructure** in C40 Cities in developing countries.

Projects are selected that provide the following benefits:

- Increased access to employment, particularly for the urban poor
- Poverty reduction
- Economic growth
- Increased job opportunities
- Improved air quality
- Improved public health

Project Development Phase Support



The CFF provides support primarily in the **Structuring** and **Transaction** stages of the Project Development Process.

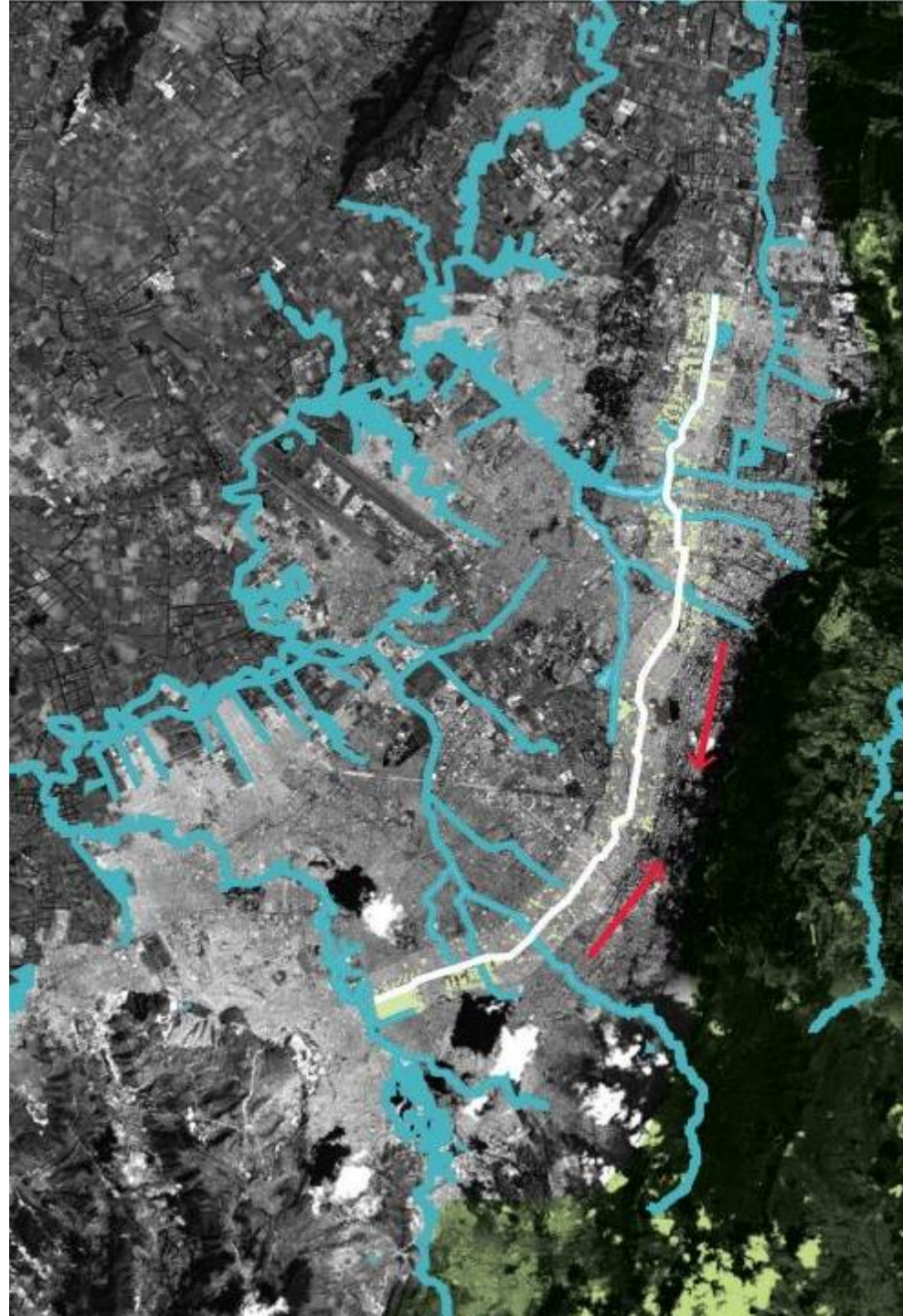
In certain exceptional cases support will be provided for the earlier **Project Feasibility** stage.



C40 CITIES
FINANCE
FACILITY

Bogotá, Colombia: Bicycle Highway “Quinto Centenario”

- **26km from Bogotá’s low-income south to the high-income north** (→ employment opportunities)
- Connecting public spaces and main water bodies
- Estimated emission reductions of **67,500 tons of CO₂e** from 2017 to 2030
- Est. **34,000 trips** in peak hours
- Est. project value: min. €8 million up to €67 million (“ideal” scenario)





Potential cyclist doesn't bike due to:	%
1. Road safety issues	54%
2. Rain	38%
3. Distance	36%
4. Personal safety	17%

In bold: Main factors addressed in the design of Quinto Centenario

Criticism by cyclists	%
1. Personal safety	56%
2. Road safety issues	53%
3. Car behaviour	42%
4. Contamination	39%
5. Bad cycleway design	37%

Motivation of cyclists	%
1. Getting in shape	44%
2. Health	28%

Source: Despacio, 2014

Success factors

- **Political support** by Mayor Peñalosa and across city departments
- **Participatory approach** including academia and civil society groups
- **Complementary partnerships** with local and regional actors
- **Coordination supported** by local Senior Project Adviser (SPA)



Thank you!



**C40 CITIES
FINANCE
FACILITY**

Funding partners:



Implementing agencies:



OBJECTIVES



PROJECT PREPARATION

of urban climate change investment projects for sustainable financing

We aim to achieve a multiplier of developing infrastructure with 50x the value of the support provided by the CFF.



CAPACITY DEVELOPMENT

of city administrations to mobilise and access a broad range of financing instruments

A city capacity assessment conducted identifies the particular areas of strength and weakness in the city administration and delivers a plan to address these.



KNOWLEDGE SHARING

beyond CFF partner cities via peer-to-peer learning and CFF stakeholders

We draw upon the expertise of the wider network of 90 C40 cities and our partners to ensure the latest thinking and approaches are integrated into projects, develop new tools and share the knowledge gained through the project



PARTNERSHIPS

between cities, investors/financiers and their representations

Our partners provide a wide range of expertise and support to enhance the effectiveness and impact of the projects supported, complementing the direct technical assistance cities receive.

CFF Modes of Support

- CFF supports its partner cities through **technical assistance**
- CFF works **through the project teams of our partner cities**
- CFF doesn't finance works or investment costs

